



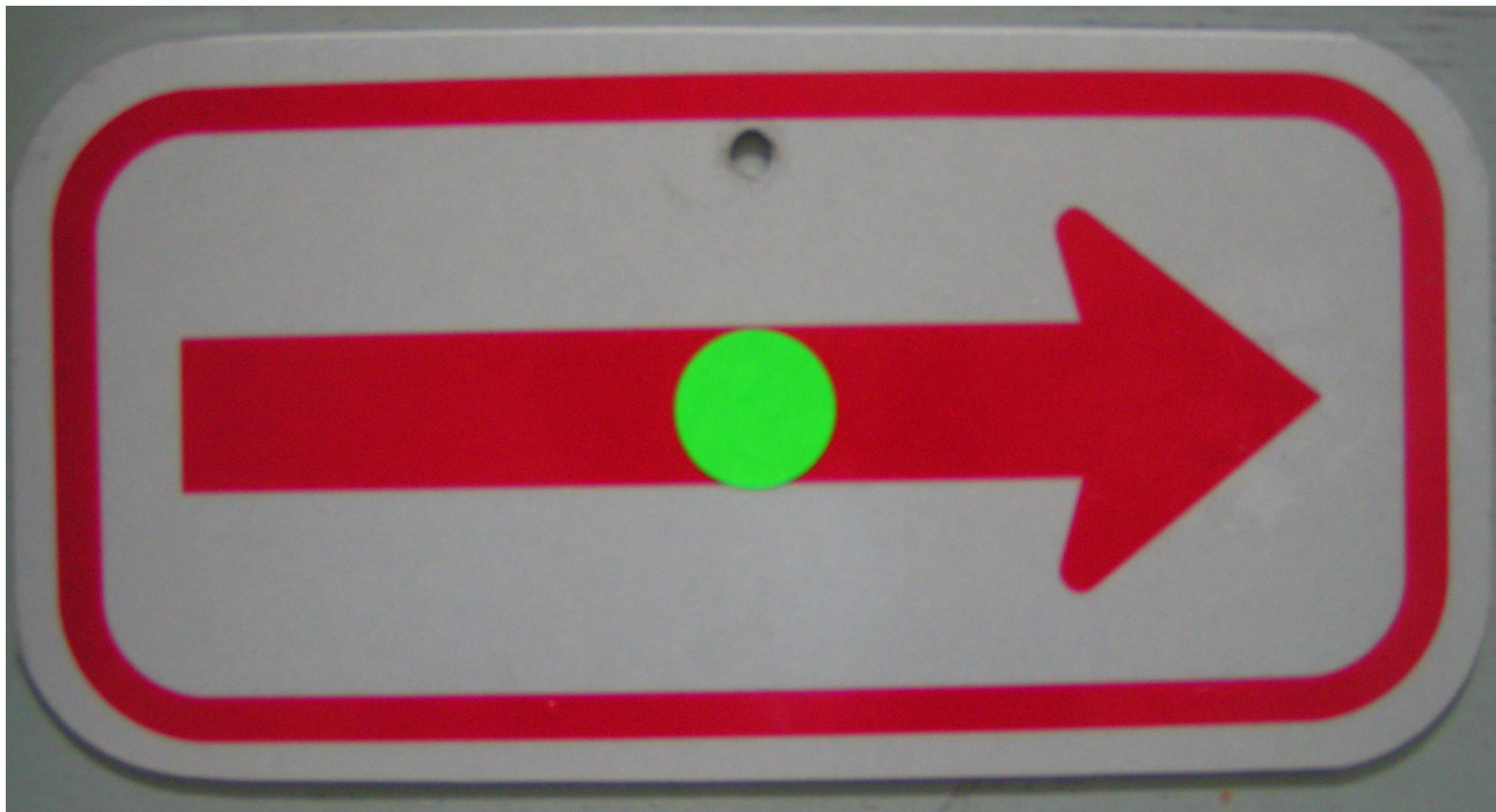
Bike Course Information

2017

Basic Information

- Be cautious
- Be aware of debris on the roads
- Crew—know your location—use your ticker
- Err on the side of safety
- Watch traffic
- Be safe
- Have fun!
- Keep smiling!

COURSE ARROWS



RIGHT Turn on to Alii Drive at FIRST intersection



RIGHT TURN ONTO SOUTH POINT RD! __Miles

Aprx 0.9 miles past MM 70.





1.7 MILES TO **SHARP** LEFT TURN ONTO KAMAOA RD.

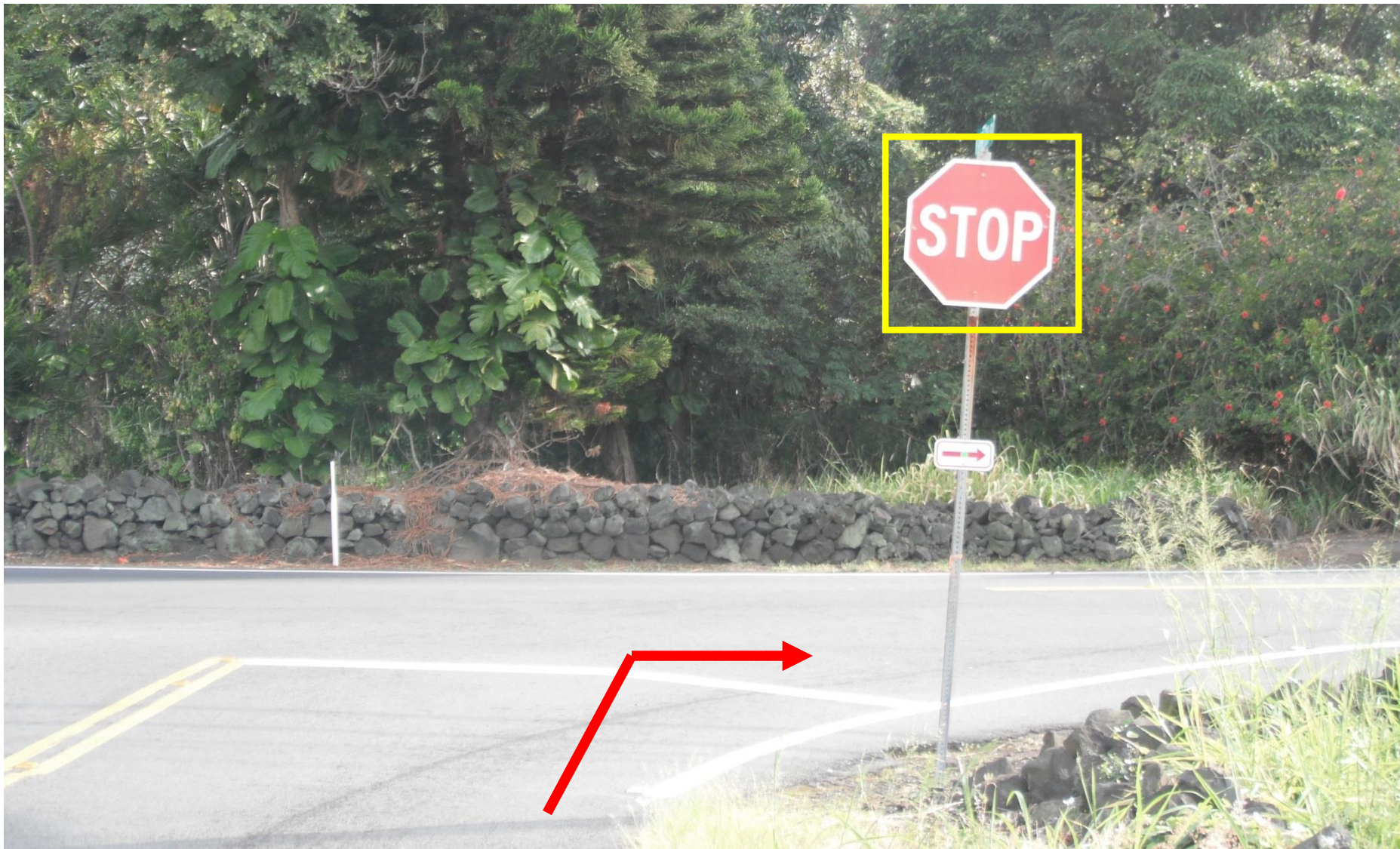




End of Kamaoa Rd.—Right turn back onto Hwy. 11



NOTICE: It is a stop sign! You must stop!



RIGHT turn to Punalu'u Black Sand Beach.



Punalu'u Loop-- Stay to left through the loop!!



RIGHT turn back onto Hwy. 11





Mile Marker

Green indicates mile location

White indicates Hwy/Rd number

8/10 of a mile after this mile marker is the right turn to Day 1 finish line!

RIGHT TURN at Pi'i Mauna Dr.
No sign coming from Kona side...First right past Mauna
Loa Rd.



Downhill to finish chute. **Watch speed!**



Metal grate after finish line. Slippery when wet. SLOW DOWN before approaching!



Google Earth View of the Day 1 Finish area, and Day 2 Start

